

FUNDAMENTALS IN NETWORK AND COMPUTER SYSTEMS ADMINISTRATION



What does a Network and Computer Systems Administrator do?

Network and Computer Systems Administrators provide help and advice to computer users and organizations. These specialists either support computer networks or they provide technical assistance directly to computer users.

Network and Computer Systems Administrators typically do the following:

- Test and evaluate existing network systems
- Perform regular maintenance to ensure that networks operate correctly
- Troubleshoot local area networks (LANs), wide area networks (WANs), and Internet systems

How will Asher College prepare me for this career?

Students who enroll in the Fundamentals in Network and Computer Systems Administration program will have the opportunity to learn:

- PC hardware support skills
- How to design and implement small office-home office networks
- How to install, configure, and maintain a Windows operating system in stand-alone, workgroup, and domain environments
- How to install, operate, configure, and verify basic IPv4 and IPv6 networks using Cisco switches, routers, and wireless networking devices

What characteristics are important in this field?*

- **Customer-service skills:** Support specialists must be patient and sympathetic; they often help people who are frustrated with the software or hardware they are trying to use.
- **Listening skills:** Support workers must be able to understand the problems that their customers are describing and know when to ask questions to clarify the situation.
- **Problem-solving skills:** Support workers must identify both simple and complex computer problems, analyze them, and solve them.
- **Speaking skills:** Support workers must describe the solutions to computer problems in a way that a nontechnical person can understand.
- **Writing skills:** Strong writing skills are useful for preparing instructions and email responses for employees and customers, as well as for real-time web chat interactions.

What are the job opportunities in this Career?

The Fundamentals in Network and Computer Systems Administration certification is appropriate for job roles including:

- Help Desk
- PC Support Technician
- Repair Technician
- Desktop Support Engineer
- Network Repair Technician
- Network Support Specialist

What is the Salary Potential and the job outlook in this field?

Asher College provides career-training programs for entry and mid-level positions. Salaries vary depending on geographical location, economic conditions, and willingness to relocate. Salaries by occupation and specific location can be found at www.onetonline.org. National figures for labor market activity, working conditions, and price changes in the economy are available at www.bls.gov/ooh/ or you can visit the campus career services department to learn where Asher graduates work and the beginning salaries in their respective careers.

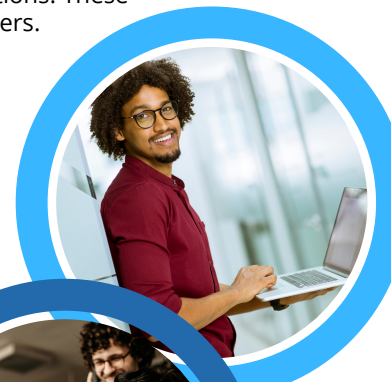
What is the job outlook for the next 10 years?*

Employment in this industry is projected to grow 6 percent from 2021 to 2031, much faster than the average for all occupations. More support services will be needed as organizations upgrade their computer equipment and software. Computer support staff will be needed to respond to the installation and repair requirements of increasingly complex computer equipment and software.

What are the typical working hours for this career?*

Most Network and Computer Systems Administrators have full-time work schedules; however, many do not work typical 9-to-5 jobs. Because computer support is important for businesses, information specialists may need to be available 24 hours a day. As a result, many specialists must work nights or weekends.

*Reference: Bureau of Labor Statistics, U.S. Department of Labor, Occupational Outlook Handbook, Computer Support Specialists, at <https://www.bls.gov/ooh/computer-and-information-technology/computer-support-specialists.htm> (visited November 01, 2022)



FUNDAMENTALS IN NETWORK AND COMPUTER SYSTEMS ADMINISTRATION



ASHER ID	COURSE NAME	CERTIFICATION EXAM OR SKILL
PCS110	PC Support Level 1	CompTIA A+ Part 1 of 2
PCS111	PC Support Level 2	CompTIA A+ Part 2 of 2
NET103	Introduction to Networking	CompTIA Network+
MOS102	Windows OS	Skill Development
CNC101	Advanced Networking Level 1	Cisco Skill Development
CD101	Career Success	Soft Skill Development
CD201	Advanced Career Development	Soft Skill Development

What Certification and Exam options do I have with this program?

CompTIA A+
CompTIA Network+



Earn the following credentials by stacking multiple CompTIA certifications:

Infrastructure Specialist – CIOS – CompTIA IT Operations Specialist (A+ and Network+)



How long will it take to complete my education?

Full time = 9 months (24 hours per week)

¾ time = 11 months (18 hours per week)

Half Time = 17 months (12 hours per week)

Program includes: books, tuition, certification exams, tutoring, and career service assistance.

*CA Students are also subject to Student Tuition Recovery Fund (STRF) fees from the California Bureau for Private and Postsecondary Education (BPPE).

Program Accredited By:



For more information on our programs, our catalogs can be viewed at <https://asher.edu/disclosures/>

www.Asher.edu

DALLAS

9330 Lyndon B. Johnson Fwy, Ste. 650
Dallas, TX 75243 • 970-600-2818

LAS VEGAS

6029 W Charleston Blvd
Las Vegas, NV 89146 • 702-323-0853

SACRAMENTO

1215 Howe Ave
Sacramento, CA 95825 • 916-900-2850